

AREA PROFILE: DEVONPORT NEIGHBOURHOOD



Author: Public Health, Plymouth City Council

Date: July 2014

This profile is produced as part of Plymouth's Joint Strategic Needs Assessment.

This profile is intended to provide a summary of the key health and social care indicators in the area. It is anticipated that the profiles will be of use to anyone with an interest in the area and how it compares with the city as a whole. Updated versions of the profiles will be produced as new information becomes available and in response to requests for additional data items or categories.

Contents

1.	Area summary	1
2.	Area table	2
3.	Area maps	3
4.	Demography	4
5.	Deprivation	5
6.	Benefits uptake	6
7.	Crime	7
8.	Education and children	8
9.	Health	9
10.	Housing	10
11.	Social care	11
		12

I. Area summary

Devonport had a total population of 6,344 in 2013. Of these 51.6% were male and 48.4% were female. 9.0% of the population were aged 0-4 years and 1.3% were aged 85+.

The overall IMD2010 deprivation score for Devonport is 60.0. Devonport ranks at number 1 (where 1 is the most deprived and 39 is the least deprived of the city's neighbourhoods).

23.4% of the population were claiming some form of benefit in 2013. This is above the city-wide figure of 11.0%. 10.9% of the working age population were claiming jobseekers allowance in 2013. This is above the city-wide figure of 3.7%.

The rate of anti-social behaviour was 79.1 per 1,000 population in 2012-13. This is above the city-wide figure of 39.5. The rate of all crime was 119.6 per 1,000 population in 2012-13. This is above the city-wide figure of 72.4.

The rate of children in need is 1,545.8 per 10,000 population aged 0-17 in 2012-13. This is above the city-wide figure of 766.3. 48.2% of pupils achieved five or more A*-C grades at GCSE (including English and Maths) in 2012-13. This is below the city-wide figure of 61.1%.

Life expectancy in 2010-12 was 73.6 years. This is below the city-wide figure of 80.5 years. The rate of emergency hospital admissions was 1,232.5 per 10,000 population in 2012/13. This is above the city-wide figure of 875.2. The all age, all cause mortality rate was 83.3 per 10,000 population in 2012. This is above the city-wide figure of 57.3.

31.0% of the private sector housing stock was classed as 'non-decent homes' in 2010. This is below the city-wide figure of 33.3%. 8.2% of the private sector housing stock was not in a reasonable state of repair in 2010. This is below the city-wide figure of 11.1%.

The rate of all clients in receipt of packages of care was 460.5 per 10,000 population aged 18+ in 2012-13. This is above the city-wide figure of 354.5. The rate of dementia clients was 58.9 per 10,000 population aged 18+ in 2012-13. This is above the city-wide figure of 43.0. The rate of clients with a learning disability was 53.2 per 10,000 population aged 18-64 in 2012-13. This is below the city-wide figure of 54.3.

2. Area table

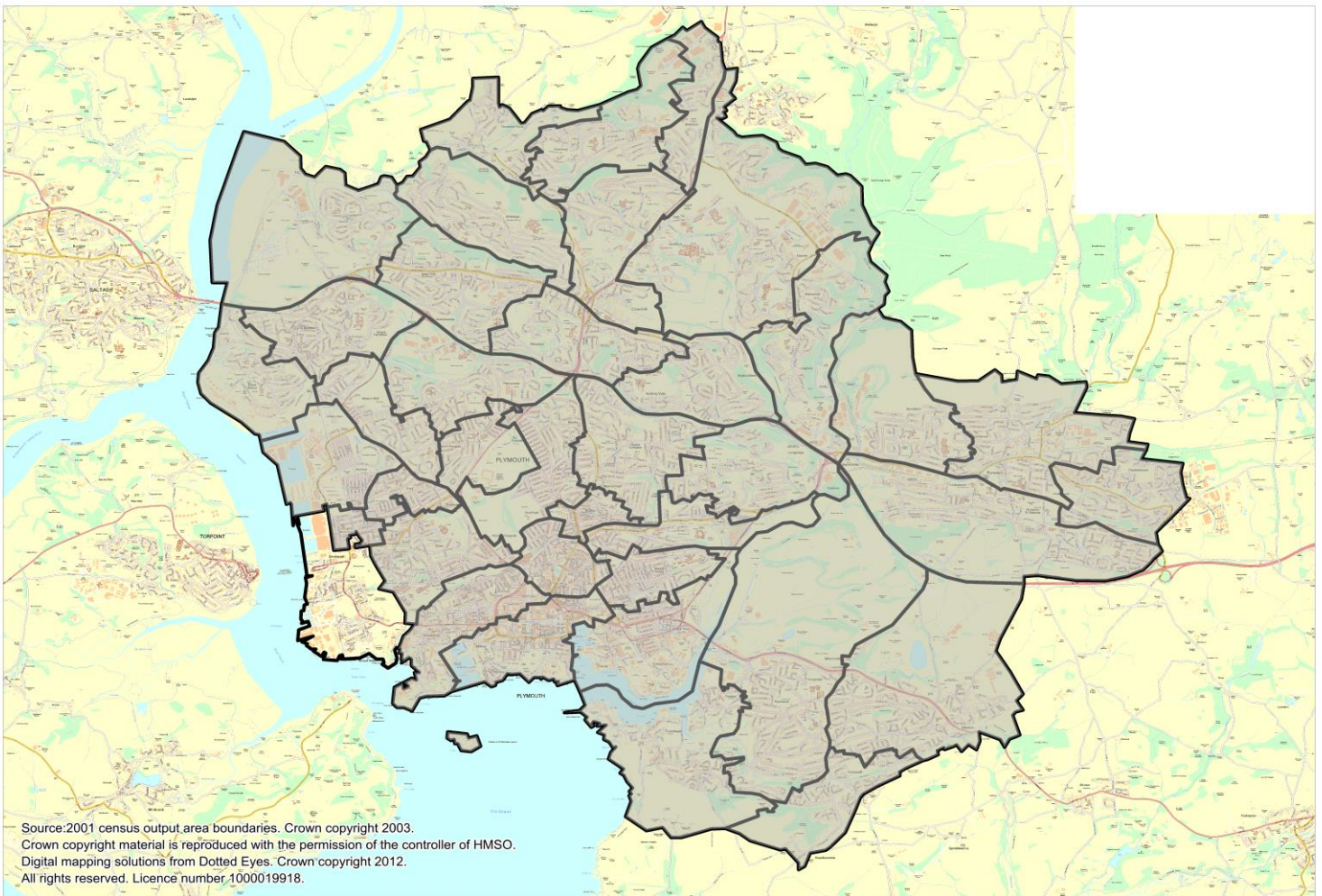
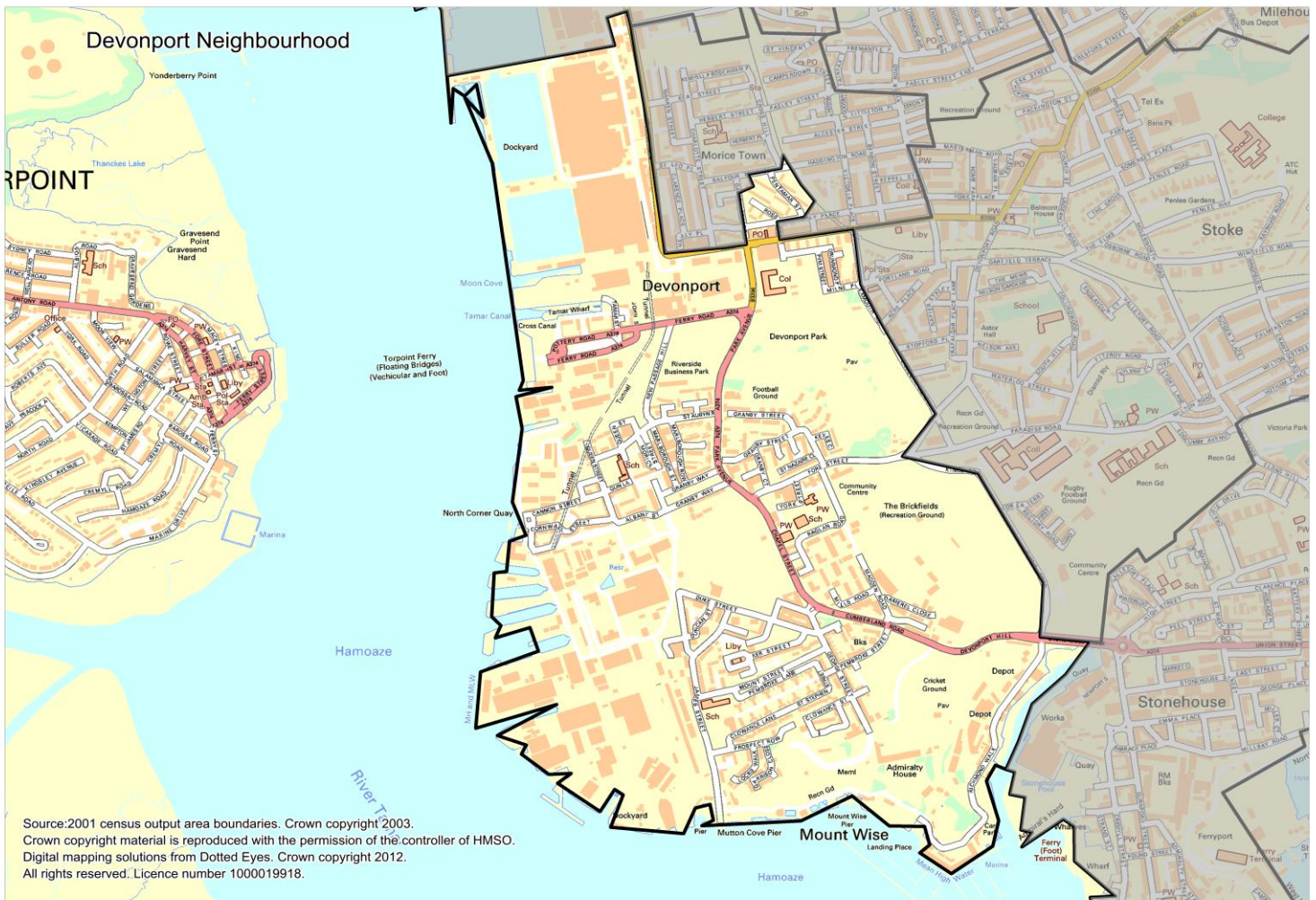
Category	Indicator	RAG
Deprivation	Overall IMD score	Red
	Barriers to housing and services score	Green
	Crime and disorder score	Red
	Education skills and training score	Red
	Employment score	Red
	Health deprivation and disability score	Red
	Income score	Red
	Living environment score	Red
	Benefits uptake	Claimants
Jobseekers		Red
Employment and support allowance / incapacity benefit		Red
Lone parent		Red
Carer benefit		Red
Income related		Red
Disabled		Red
Bereaved		Red
Male - employment benefits		Red
Female - employment benefits		Red
16-24 employment benefits		Red
25-49 employment benefits		Red
50 and over employment benefits		Red
Crime		Anti-social behaviour
	Criminal damage	Red
	Domestic abuse incidents	Red
	Serious acquisitive crime	Red
	Violence with injury	Red
	All crime	Red
Education and children	Child protection	Green
	Children in care	Red
	Children in need	Red
	Key stage 2 pupils who achieved required Level 4 in English and Maths	Red
	Key stage 2 pupils with free school meal eligibility who achieved required Level 4 in English and Maths	Green
	Permanent exclusions	Green
	Pupils achieving five or more A*-C grades at GCSE (including English and Maths)	Red

Category	Indicator	RAG
Health	Life expectancy	Red
	Smoking in pregnancy	Red
	Breastfeeding at 6-8 weeks	Red
	Vulnerable families	Red
	Excess weight (reception)	Red
	Excess weight (year 6)	Red
	Adult smoking	Red
	Excess weight in adults	Red
	Outpatient DNAs	Red
	Emergency hospital admissions	Red
	Cancer mortality <75s	Red
	CVD mortality <75s	Red
	All age all cause mortality	Red
	Housing	Non-decent homes
Thermal comfort		Red
Category 1 hazards		Green
Disrepair		Green
Non-modern amenities		Red
Category 1 excess cold		Green
Social care	All clients	Red
	Community based service clients	Red
	Dementia clients	Red
	Learning disabilities 18-64 clients	Green

Key	
Better than Plymouth	Green
Same as Plymouth	Yellow
Worse than Plymouth	Red
Data has been suppressed	N/A

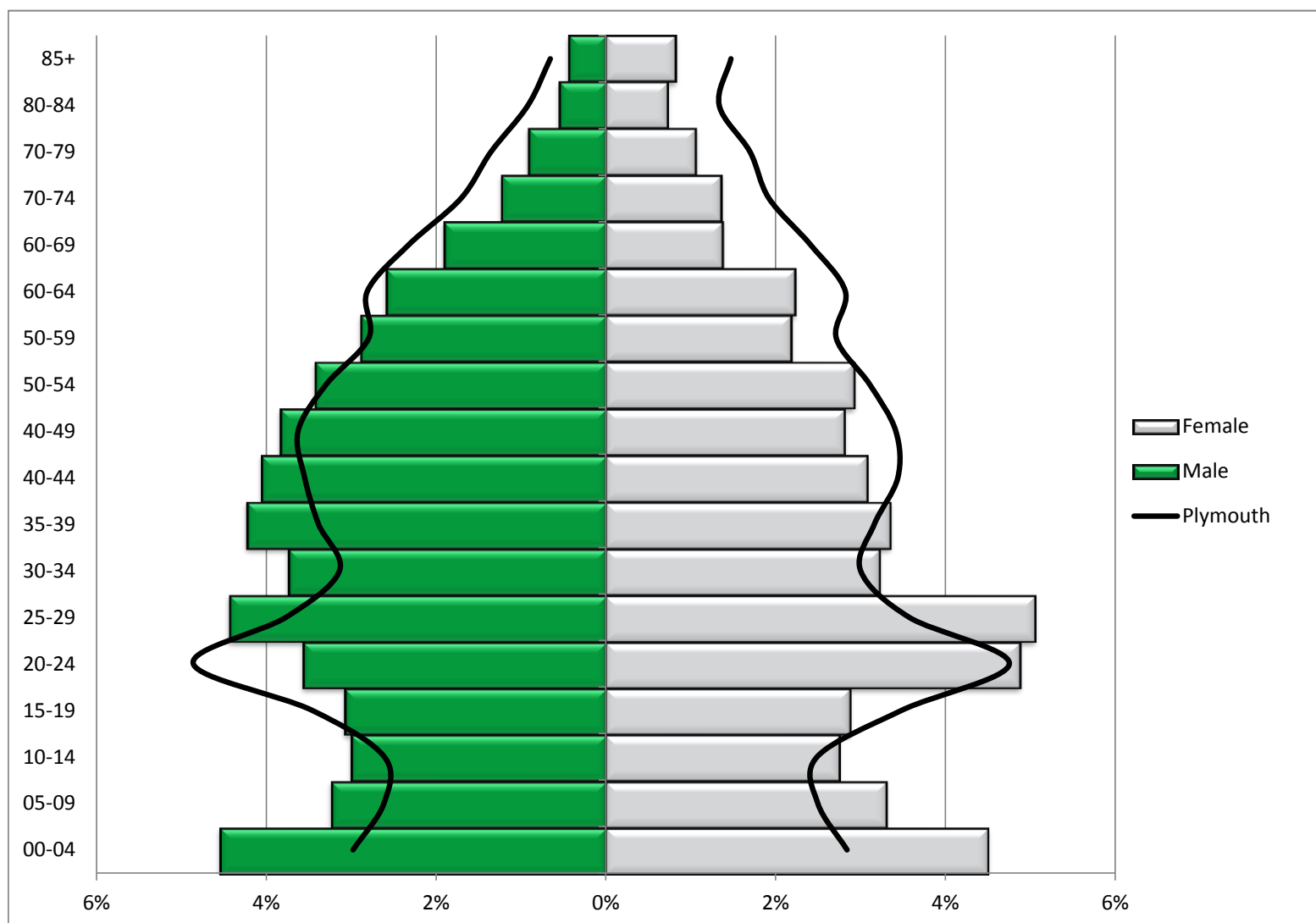
Please note that the Red/Amber/Green rating applied in this table simply indicates whether the value for the area is worse, equal to, or better than Plymouth as a whole. It gives no indication of how much 'better' or 'worse' the area is than the city as a whole for that specific indicator. The definitions of each of these indicators are given on the subsequent topic-specific pages.

3. Area maps



4. Demography

Devonport population pyramid



Age group	Population (number)			Population (percentage)			Plymouth (percentage)		
	Male	Female	Total	Male	Female	Total	Male	Female	Total
00-04	288	285	573	4.5	4.5	9.0	2.8	2.7	5.5
05-09	205	209	414	3.2	3.3	6.5	2.5	2.3	4.8
10-19	385	356	741	6.1	5.6	11.7	5.7	5.6	11.3
20-34	744	833	1,577	11.7	13.1	24.9	14.2	13.6	27.8
35-44	525	407	932	8.3	6.4	14.7	6.5	6.2	12.7
45-64	807	642	1,449	12.7	10.1	22.8	11.8	11.3	23.1
65-74	199	173	372	3.1	2.7	5.9	3.8	4.1	7.9
75-84	93	113	206	1.5	1.8	3.2	2.1	2.8	5.0
85+	28	52	80	0.4	0.8	1.3	0.6	1.4	2.0
All ages	3,274	3,070	6,344	51.6	48.4	100.0	50.0	50.0	100.0

Source: GP population register, October 2013

5. Deprivation

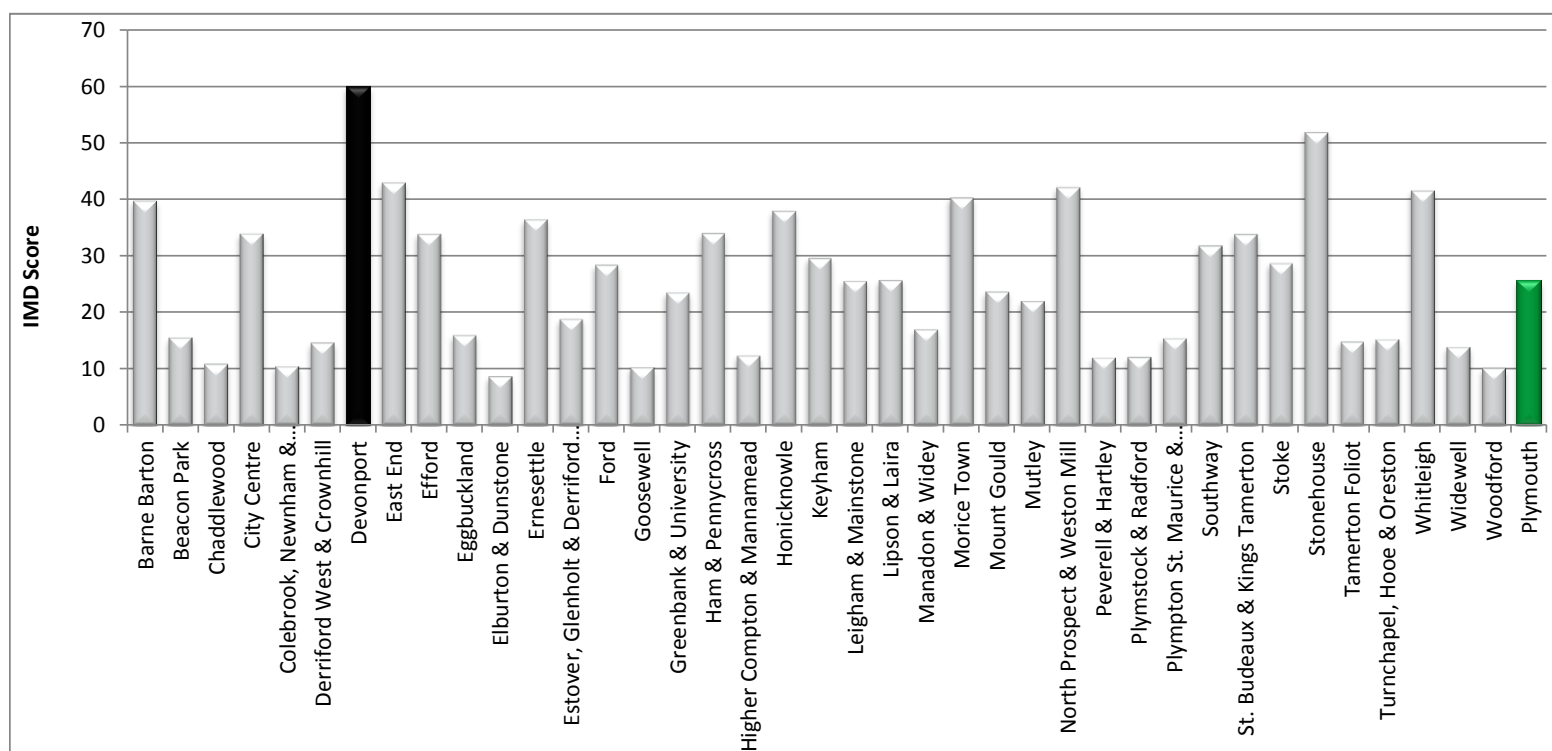
Index of multiple deprivation 2010 Overall domain scores	Area		Plymouth average
	Value	Rank	
Overall IMD score	60.0	1	25.6
Barriers to housing and services score	21.3	25	22.5
Crime and disorder score	0.5	14	0.2
Education, skills and training score	61.7	1	25.4
Employment score	0.3	1	0.1
Health deprivation and disability score	1.6	1	0.4
Income score	0.4	1	0.2
Living environment score	47.8	12	31.5

Deprivation measures attempt to identify communities where the need for healthcare is greater, material resources are less and as such the capacity to cope with the consequences of ill-health are less. Areas are therefore deprived if there is inadequate education, inadequate housing, unemployment, insufficient income, poor health, and low opportunities for enjoyment. A deprived area is conventionally understood to be a place in which the residents tend to be relatively poor and are relatively likely to suffer from misfortunes such as ill-health.

The Index of Multiple Deprivation 2010 (IMD2010) is the current official measure of deprivation. The IMD2010 combines a number of indicators, chosen to cover a range of economic, social and housing issues, into a single deprivation score for each small area in England. This allows each area to be ranked relative to one another according to their level of deprivation.

The IMD2010 is not routinely available at neighbourhood level, analysis has therefore been carried out by Plymouth City Council, Public Health Team to produce IMD2010 scores for each of the city's 39 neighbourhoods. The higher the score, the more deprived the area is on that measure. The neighbourhoods are ranked from 1 (most deprived) to 39 (least deprived).

Overall IMD2010 scores

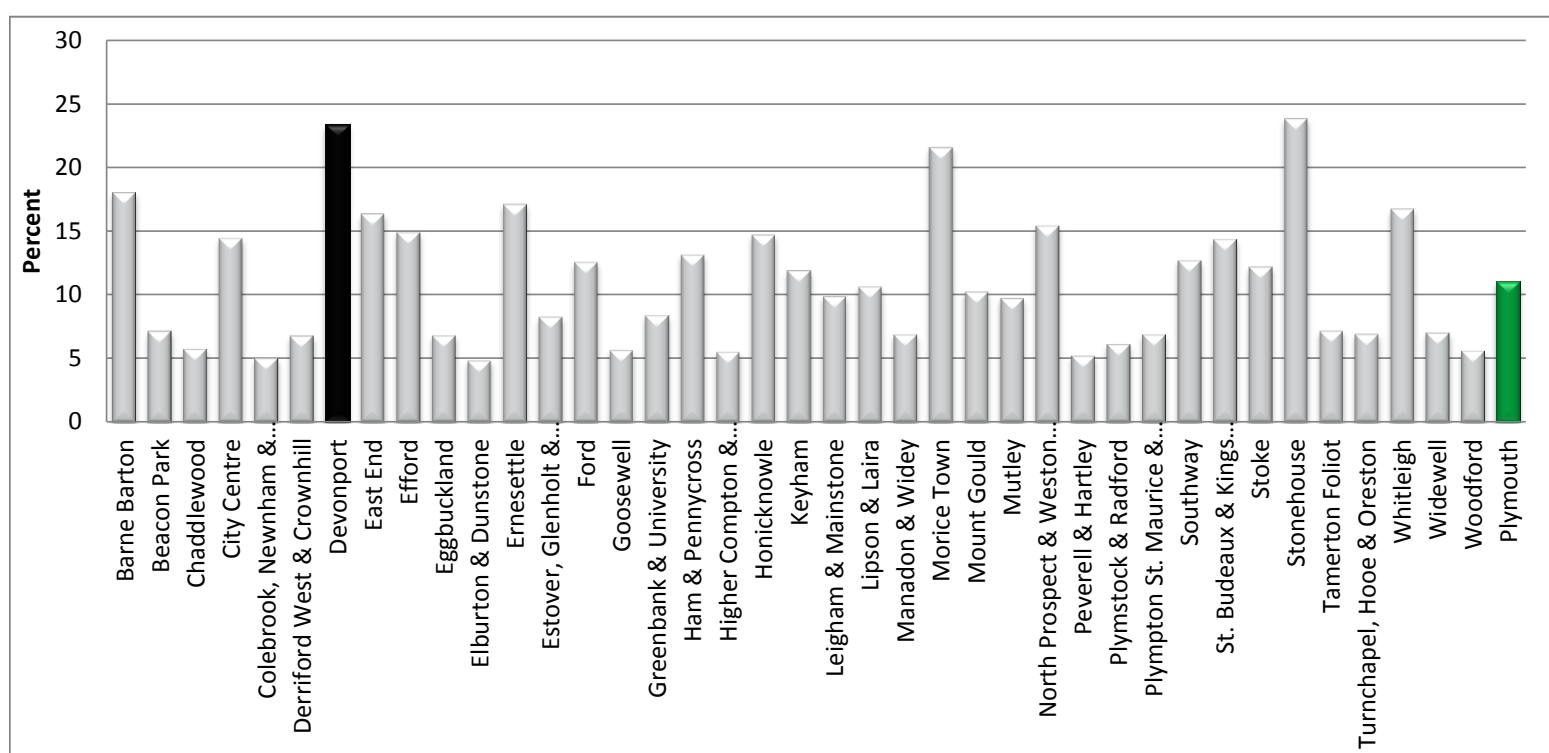


6. Benefits uptake

	2013 (Area)	2013 (Plymouth)	2012 (Area)	2011 (Area)
1. Claimants (%) Feb 2013	23.4	11.0	23.6	23.6
2. Jobseekers (%) Feb 2013	10.9	3.7	10.5	8.5
3. Employment and support allowance / incapacity benefit (%) Feb 2013	20.2	8.2	18.3	17.6
4. Lone parent (%) Feb 2013	4.2	1.3	4.4	4.3
5. Carer benefit (%) Feb 2013	3.1	1.6	2.9	2.3
6. Income related (%) Feb 2013	0.7	0.4	0.9	0.7
7. Disabled (%) Feb 2013	2.7	1.8	2.1	2.0
8. Bereaved (%) Feb 2013	0.3	0.2	0.3	0.0
9. Male - employment benefits (%) Feb 2013	37.5	17.0	38.2	38.3
10. Female- employment benefits (%) Feb 2013	32.2	16.6	32.2	32.3
11. 16-24 employment benefits (%) Feb 2013	29.5	12.3	33.4	32.3
12. 25-49 employment benefits (%) Feb 2013	34.3	17.2	34.3	35.5
13. 50 and over employment benefits (%) Feb 2013	40.8	20.0	38.9	37.9

1. Percentage of claimants based on the ONS mid year estimates 2. Percentage of Jobseekers claimants based on the working age population 3. Percentage of employment and support allowance / incapacity benefit claimants based on the working age population 4. Percentage of lone parent claimants based on the working age population 5. Percentage of carer benefit claimants based on the working age population 6. Percentage of income related benefits claimants based on the working age population 7. Percentage of disabled claimants based on the working age population 8. Percentage of bereaved claimants based on the working age population 9. Percentage of male employment benefits claimants based on the working age population 10. Percentage of female employment benefits claimants based on the working age population 11. Percentage of employment benefits claimants aged 16-24 based on the working age population 12. Percentage of employment benefits claimants aged 25-49 based on the working age population 13. Percentage of employment benefits claimants aged 50 and over based on the working age population.

Claimants (%) in Feb 2013



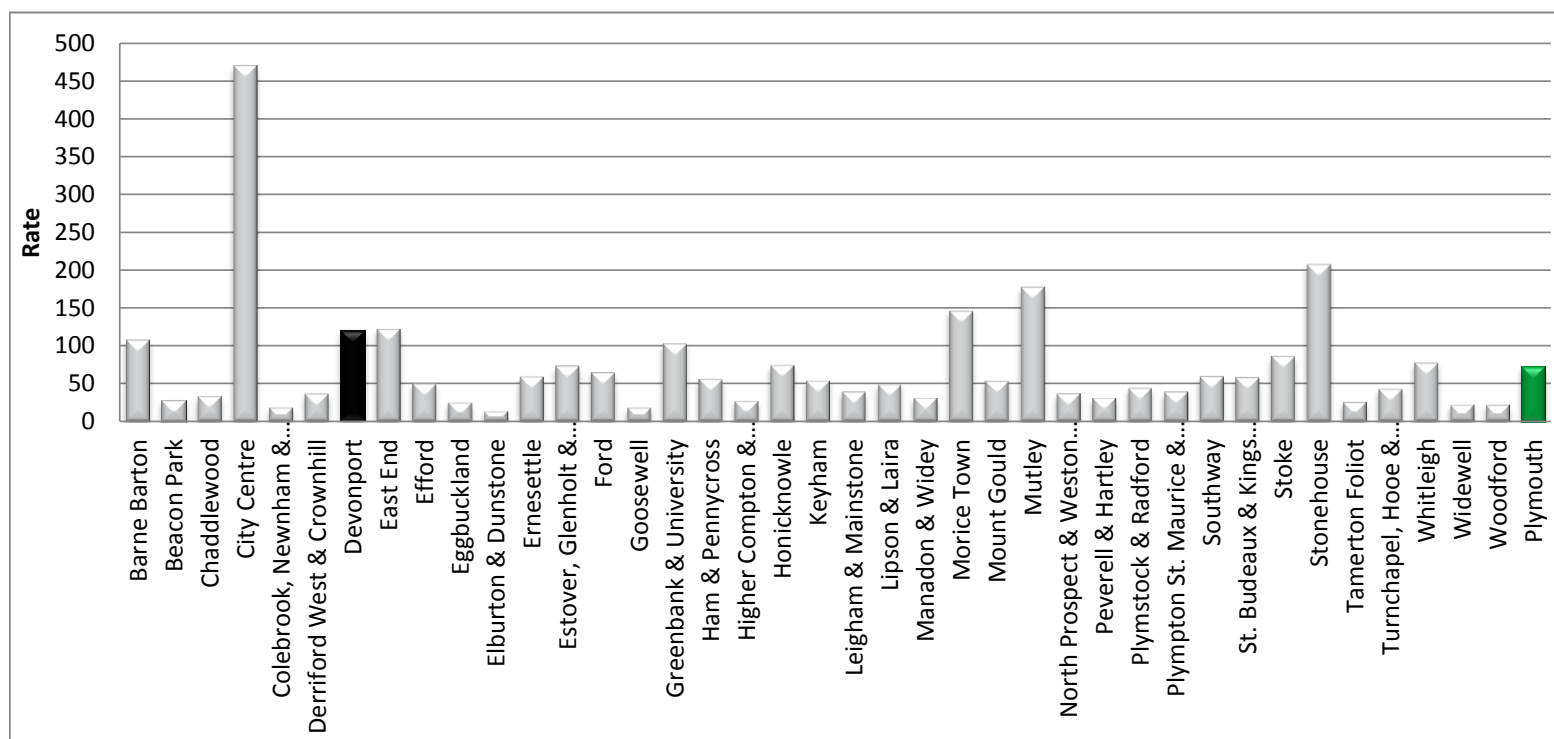
7. Crime

	2012-13 (Area)	2012-13 (Plymouth)	2011-12 (Area)	2010-11 (Area)
1. Anti-social behaviour (rate per 1,000 pop) 2011-12	79.1	39.5	97.7	115.4
2. Criminal damage (rate per 1,000 pop) 2012-13	20.6	12.4	20.3	18.6
3. Domestic abuse incidents (rate per 1,000 pop) 2012-13	53.3	24.0	47.4	48.2
4. Serious acquisitive crime (rate per 1,000 pop) 2012-13	11.2	8.7	15.6	11.3
5. Violence with injury (rate per 1,000 pop) 2012-13	19.8	10.0	20.3	17.7
6. All crime (rate per 1,000 pop) 2012-13	119.6	72.4	181.7	153.4

Please note these statistics are a approximation as Devon and Cornwall Police divide the city in a different way to Plymouth City Council.

1. Incidents of anti-social behaviour (ASB) per 1,000 population recorded by Devon and Cornwall Police. 2. Rate of criminal damage crimes per 1,000 population recorded by Devon and Cornwall Police. 3. Rate of domestic abuse incidents per 1,000 population recorded by Devon and Cornwall Police. Domestic abuse defined by HM Government as 'Any incident of threatening behaviour, violence or abuse (psychological, physical, sexual, financial or emotional) between adults who are or have been intimate partners or family members, regardless of gender or sexuality'. 4. Rate of serious acquisitive crimes per 1,000 population recorded by Devon and Cornwall Police. Serious acquisitive includes; domestic burglary (including religiously and racially aggravated), theft from vehicle (including religiously and racially aggravated) and robbery (including religiously and racially aggravated). 5. Rate of violence with injury crimes per 1,000 population recorded by Devon and Cornwall Police. Violence with injury includes primarily; grievous bodily harm, assault/ occasioning actual bodily harm and malicious wounding. 6. Rate of all crime per 1,000 population recorded by Devon and Cornwall Police.

All crime (per 1,000 resident population) in 2012-13



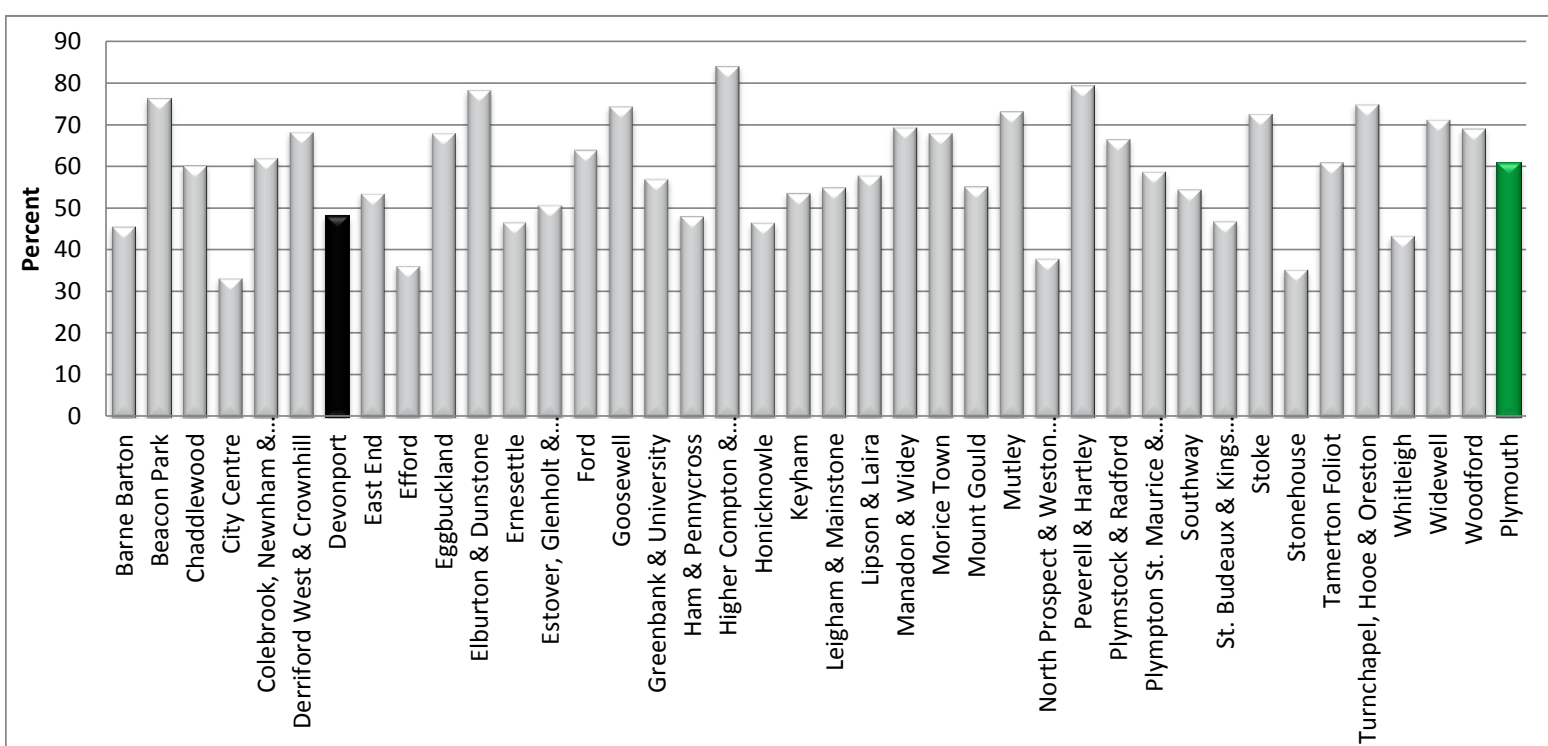
8. Education and children

	2012-13 (Area)	2012-13 (Plymouth)	2011-12 (Area)	2010-11 (Area)
1. Child protection (rate per 10,000 0-17 pop) 2012-13	44.5	62.9	400.0	310.3
2. Children in care (rate per 10,000 0-17 pop) 2012-13	203.6	86.1	238.7	278.0
3. Children in need (rate per 10,000 0-17 pop) 2012-13	1,545.8	766.3	1,658.1	1,868.1
4. Key stage 2 pupils who achieved required Level 4 in Reading , Writing and Maths (%) 2012-13	71.4	73.2	61.5	41.5
5. Key stage 2 pupils with free school meal eligibility who achieved required Level 4 in Reading , Writing and Maths (%) 2012-13	66.7	56.1	N/A	N/A
6. Permanent exclusions (%) 2012-13	0.00	0.02	0.1	-
7. Pupils achieving five or more A*-C grades at GCSE (including English and Maths) (%) 2012-13	48.2	61.1	46.6	22.4

**Indicates the data is suppressed; this only applies to certain areas and indicators.

1. Number of children with a children protection plan per 10,000 0-17 population. 2. Rate of children looked after per 10,000 0-17 population. 3. The number of children in need as a rate per 10,000 0-17 population. 4. The percentage of key stage 2 pupils who achieved required level 4 in Reading , Writing and Maths. 5. The percentage of key stage 2 pupils with free school meal eligibility who achieved required level 4 in Reading , Writing and Maths. 6. The percentage of permanent exclusions. 7. The percentage of pupils achieving five or more A*-C grades at GCSE (including English and Maths).

Five or more A*-C grades at GCSE including English and Maths (%) 2012-13



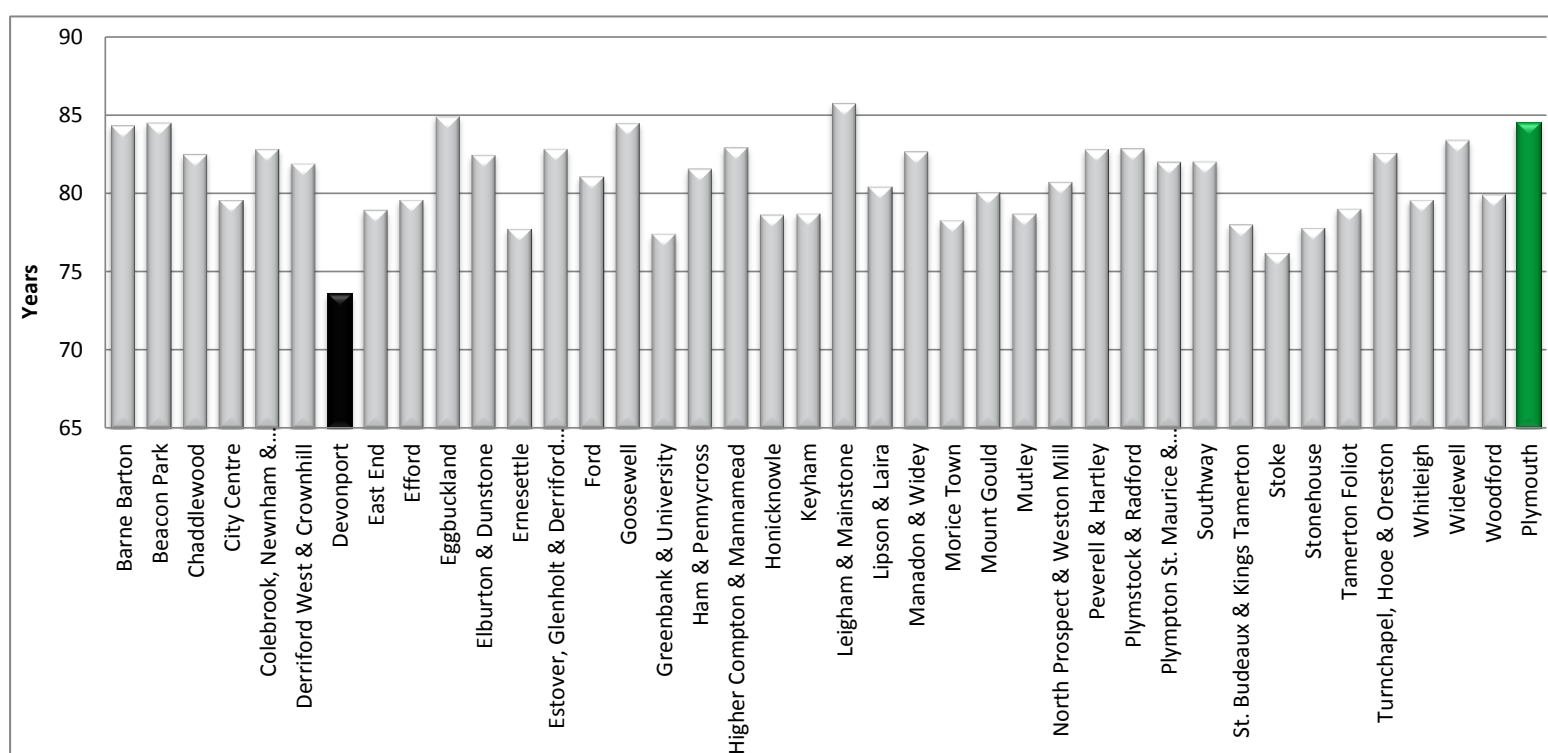
9. Health

	Latest period* (Area)	Latest period* (Plymouth)	Previous period* (Area)	2nd Previous period* (Area)	3rd Previous period* (Area)
1. Life expectancy (years) 2010-12	73.6	80.5	72.2	72.7	72.7
2. Smoking in pregnancy (%) 2012	31.0	16.7	35.6	28.4	25.0
3. Breastfeeding at 6-8 weeks (%) 2012	23.0	33.0	22.1	23.4	28.4
4. Vulnerable families (%) 2012	26.61	13.0	24.1	33.4	47.7
5. Excess weight (reception) (%) 2012/13	27.1	24.9	30.3	32.5	40.3
6. Excess weight (year 6) (%) 2012/13	37.5	32.1	35.6	40.6	42.6
7. Adult smoking (%) 2012/13	36.8	17.4	34.8	37.7	N/A
8. Excess weight in adults (%) 2012/13	67.4	67.3	61.2	59.4	-
9. Outpatient DNAs (%) 2012/13	10.92	6.2	11.2	12.5	N/A
10. Emergency hospital admissions (rate per 10,000 pop) 2012/13	1,232.5	875.2	1,179.3	1,370.6	1,525.7
11. Cancer mortality <75s (rate per 10,000 pop) 2012	11.7	7.2	16.8	27.7	26.6
12. CVD mortality <75s (rate per 10,000 pop) 2012	21.9	14.6	19.2	13.4	19.9
13. All age all cause mortality (rate per 10,000 pop) 2012	83.3	57.3	104.2	106.0	101.6

*As the health indicators are not all based on the same time periods, the terms 'latest period', 'previous period', '2nd previous period' and '3rd previous period' have been used. Using this convention and by referring to the specific indicator names, it is possible to determine the time period that each data item refers to. **Indicates the data is suppressed; this only applies to certain areas and indicators.

1. Life expectancy at birth in years. 2. Percentage of women who smoked during pregnancy. 3. Percentage of women breastfeeding at the time of their child's 6-8 week check. 4. Percentage of families classified as vulnerable based on the bi-annual survey of health visitor caseloads. 5. Percentage of children in reception classified as overweight or obese. 6. Percentage of children in year 6 classified as overweight or obese. 7. Percentage of adults who are current smokers. 8. Percentage of adults classified as overweight or obese. 9. Percentage of missed outpatient appointments. 10. Rate of emergency hospital admissions per 10,000 population. 11. Rate of cancer mortality per 10,000 population aged less than 75. 12. Rate of circulatory disease mortality per 10,000 population aged less than 75. 13. All age all cause mortality rate per 10,000 population.

Life expectancy (years) 2010-12



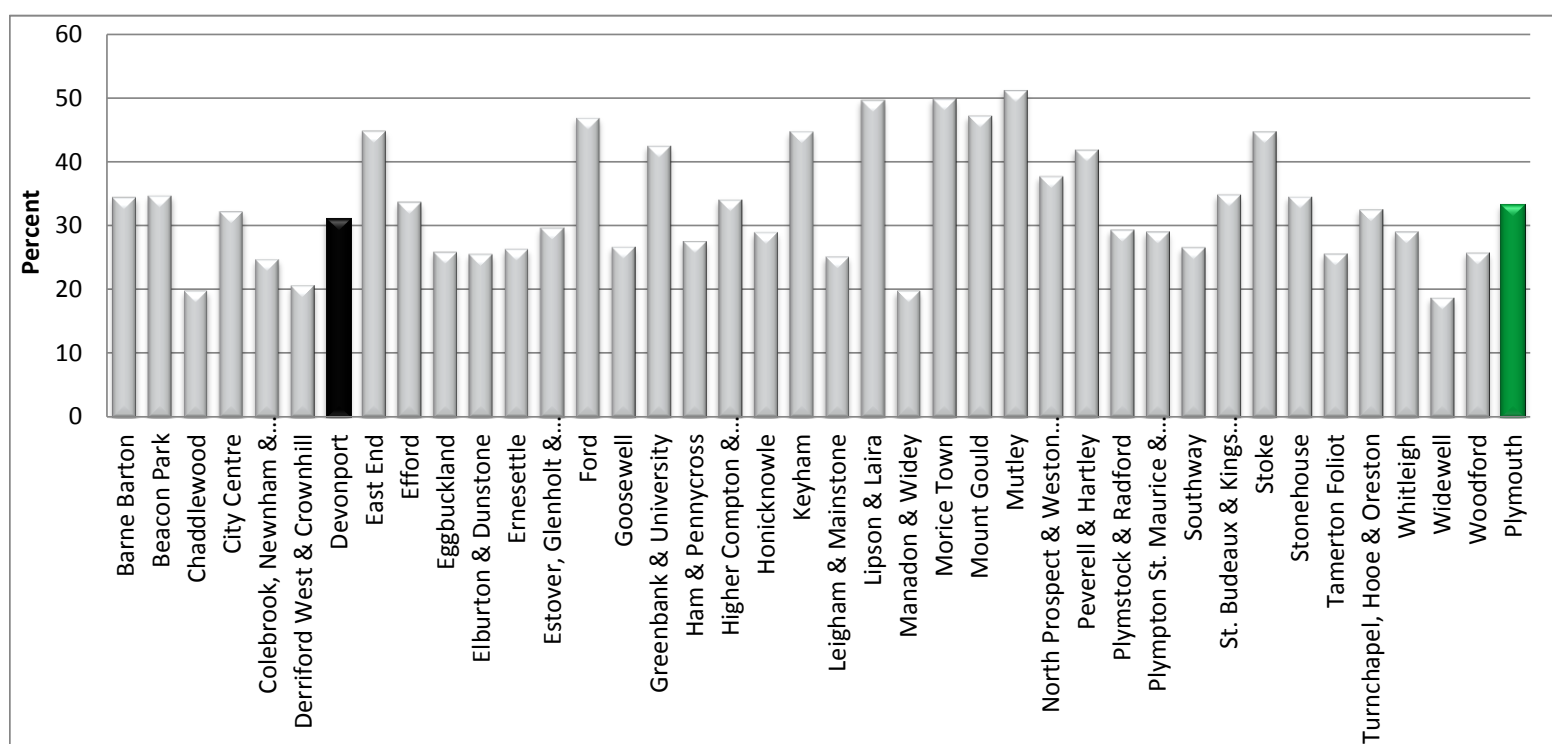
10. Housing

Plymouth's private sector housing stock	2010 (Area)	2010 (Plymouth)
1. Non-decent homes (%) 2010	31.0	33.3
2. Thermal comfort (%) 2010	15.6	14.8
3. Category I hazards (%) 2010	18.2	20.9
4. Disrepair (%) 2010	8.2	11.1
5. Non-modern amenities (%) 2010	5.0	4.1
6. Category I excess cold (%) 2010	7.2	8.9

1. To be a decent home, the home must be free of category I hazards (as measured by the housing health and safety rating system), be in a reasonable state of repair, have reasonably modern facilities and services, and provide a reasonable degree of thermal comfort. 2. Percentage of homes that fail to provide a reasonable degree of thermal comfort (a reasonable degree of thermal comfort is having effective insulation and efficient heating). 3. Percentage of homes that have at least one category I hazard as measured by the housing health and safety rating system. 4. Percentage of homes that are not in a reasonable state of repair (need one or more key building components to be replaced or two or more other building components to be replaced). 5. Percentage of homes that don't have reasonably modern facilities and services. 6. Percentage of homes that fall into the excess cold category as measured by the housing health and safety rating system.

For more information about the indicators above see the following web page. <http://www.communities.gov.uk/publications/housing/decenthome>

Non-decent homes (%) 2010



11. Social care

	2012-13 (Area)	2012-13 (Plymouth)	2011-12 (Area)	2010-11 (Area)
1. All clients (rate per 10,000 18+ pop) 2012-13	460.5	354.5	396.3	378.7
2. Community based service clients (rate per 10,000 18+ pop) 2012-13	368.8	261.8	363.0	340.4
3. Dementia clients (rate per 10,000 18+ pop) 2012-13	58.9	43.0	39.6	38.3
4. Learning disabilities 18-64 clients (rate per 10,000 18-64 pop) 2012-13	53.2	54.3	48.4	-

1. Number of unique clients in receipt of packages of care during the financial year (includes community based services, residential care and nursing care) as a rate per 10,000 18+ population. 2. Number of unique clients in receipt of community based services (CBS) during the financial year as a rate per 10,000 18+ population. 3. Number of unique clients with dementia as a rate per 10,000 18+ population. 4. Number of unique clients of working age (18-64) with learning disabilities (LD) known to the Council as a rate per 10,000 18-64 population.

All clients (per 10,000 18+ resident population) 2012-13

